

to San Pedro Buenavista 97°22'0"W

97°21'0"W

17°29'0"N

17°28'0"N

17°29'0"N

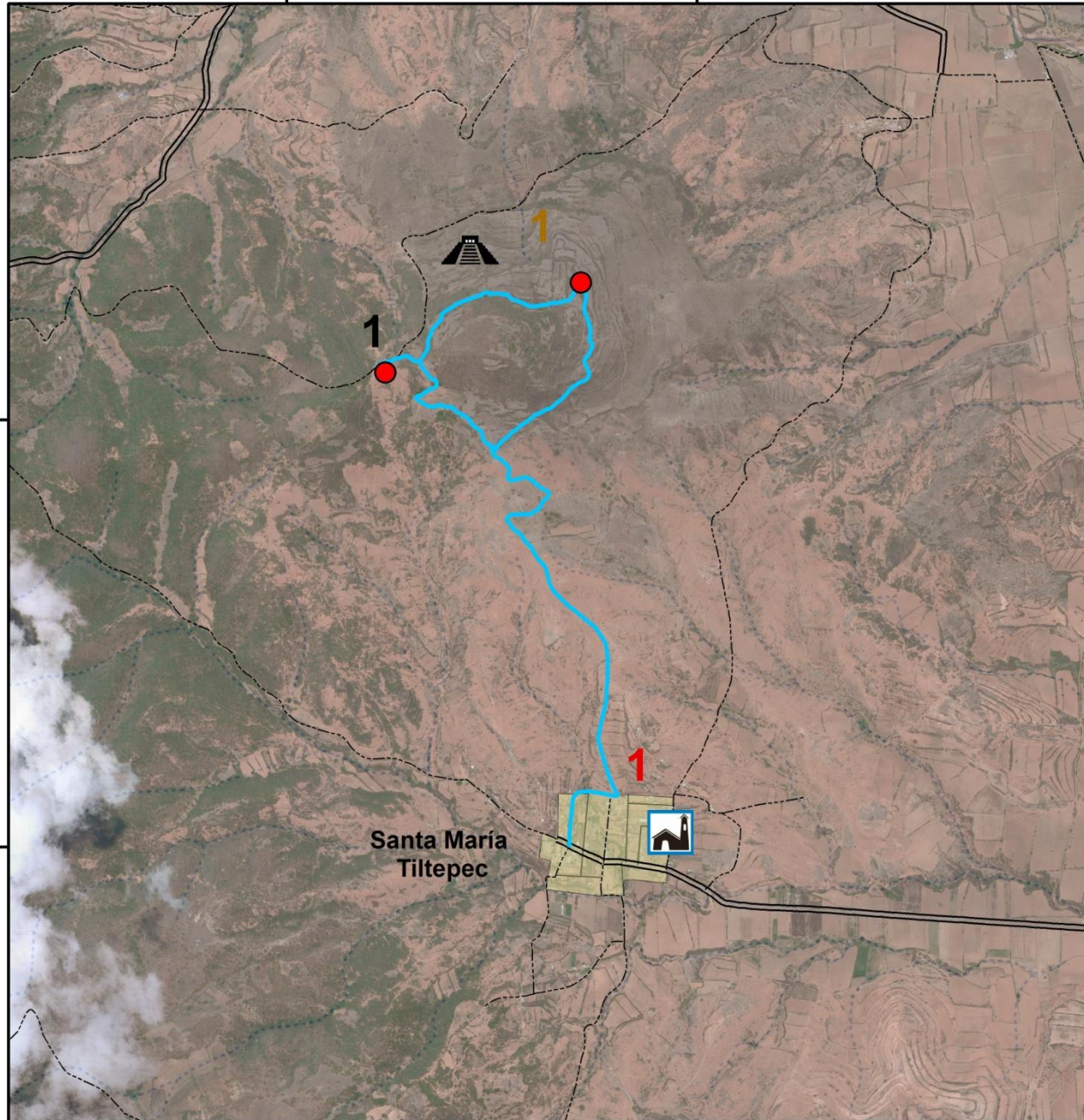
17°28'0"N

to Santiago Tillo

97°22'0"W

to San Pedro Topiltepec

97°21'0"W



### Geosites

1 El Jazmín site\*

\*These sites include one or more sub-sites

### Geosites main interest

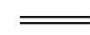
 Geomorphological

 Sites of historical heritage

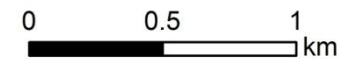
1 Santa María Tiltepec Temple

 Archaeological sites

1 El Jazmín

 Roads

 Dirt roads



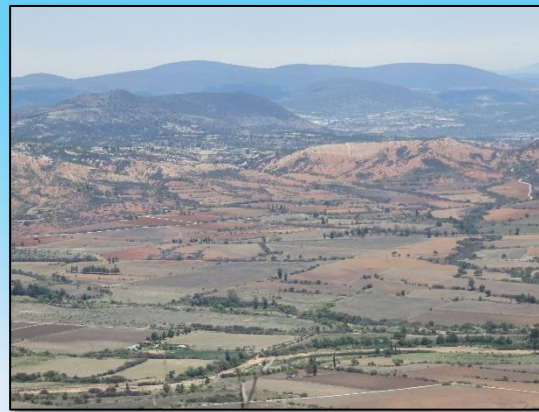
## Geosites

① **El Jazmín site.** On this trail erosion amphitheatres, product of mass wasting and fluvial erosion are depicted. They are very active forms that grow even after a heavy rain event; They are common features in the Geopark.

These amphitheatres are presented in red rocks corresponding to the Yanhuitlán Training.



Erosive amphitheater "El Boquerón" in Santa María Tiltepec



Excellent panoramic views of the Yanhuitlán Valley where it is possible to distinguish the different geomorphological units, i.e. relief forms.

Along this trail it is also possible to see structures and archaeological remains of one of the most important settlements in the Mixteca.

The trail also allows us to appreciate flora and fauna characteristic of the region.



Oaxaca

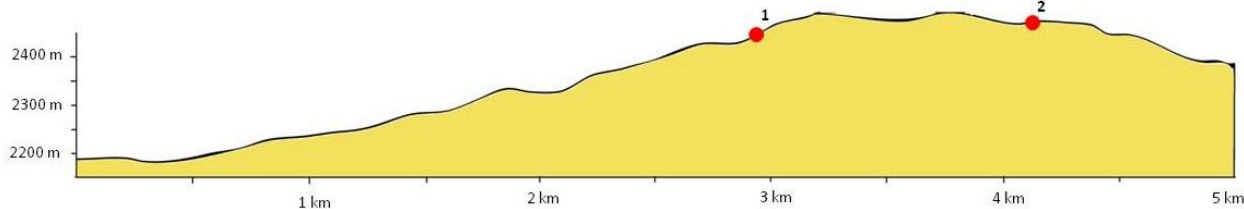
## Geotrail Cerro Jazmín

**Length** : 5 km

**Min. Altitude** : 2,200 m

**Max. Altitude** : 2,450 m

Archaeological site. Along this trail panoramic views of the Yanhuitlán Valley are exceptional; the magnitude of erosion in the territory is clear. In addition, on top of the hill it is one of the most important archaeological sites in the Mixteca Alta



[www.geoparquemixtecaalta.org](http://www.geoparquemixtecaalta.org)  
[geoparque.mixtecaalta@gmail.com](mailto:geoparque.mixtecaalta@gmail.com)

Follow us:

