

to San Pedro Buenavista 97°18'0"W

97°16'0"W

17°38'0"N

17°38'0"N

17°36'0"N

17°36'0"N

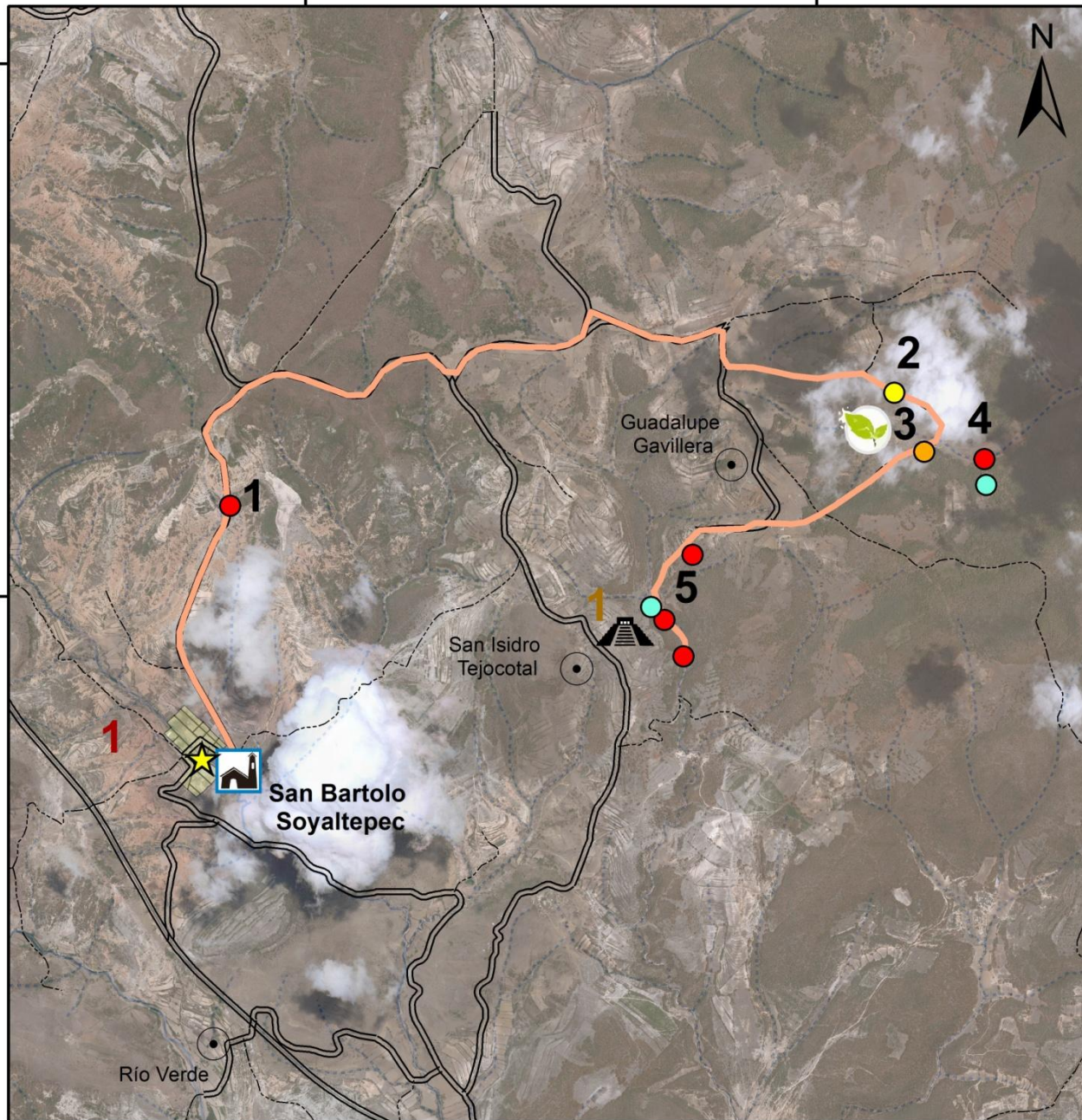
to Tehuacán

17°34'0"N

17°34'0"N

97°18'0"W to Nochixtlán

97°16'0"W



Geosites

- 1 Caballo Blanco site
- 2 Yutzatotiaca site
- 3 Teposcolula limestone quarry
- 4 La Laguna site*
- 5 Yutoto site*

*These sites include one or more sub-sites

Geosites main interest

- Geomorphological
- Mineralogical
- Petrological
- Geocultural sites (Lamabordos)



Sites of natural heritage

- 1 Totiacaluchi dam



Sites of historical heritage

- 1 San Bartolo Soyaltepec Temple



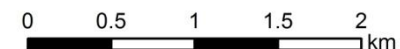
Archaeological sites

- 1 Yutoto
- ★ Start point of Yutoto geotrail

- Urban locations

— Roads

- - - - - Dirt roads



Geositios

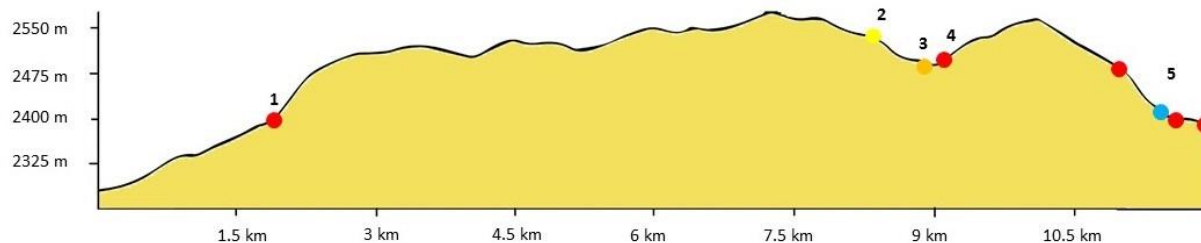
- 1 **Caballo Blanco site.** This site is characterized by the presence of erosive amphitheatres resulting from mass wasting and fluvial erosion processes.
- 2 **Yutzatotiaca site.** On this site you can walk by the river Yutzateche and find the lithological contact between the Yanhuitlán Formation and Teposcolula Limestone; small waterfalls due to lithological differences are depicted.
- 3 **Quarry.** Abandoned Limestone quarry, Good examples of Cretaceous fossils.



- 4 **La Laguna site.** In this site the predominant rock is limestone, which has allowed the formation of caverns and the presence of terra-rossa by the dissolution of limestone; there are also several systems lamabordos.



- 5 **Yutoto site.** Karst landscape; caverns, terra-rossa and erosion features related to a karst development.



Oaxaca

Geotrail Yutoto

Length : 12 km

Min. Altitude : 2,300 m

Max. Altitude : 2,600 m

The Yutoto geotrail, in the municipality of San Bartolo Soyaltepec, shows its geodiversity through the oldest lithological units of the territory (Cretaceous limestone), karst features, such as caves, lapiaz (or lenar) fields and fossils, among other.

www.geoparquemixtecaalta.org
geoparque.mixtecaalta@gmail.com

Follow us:

